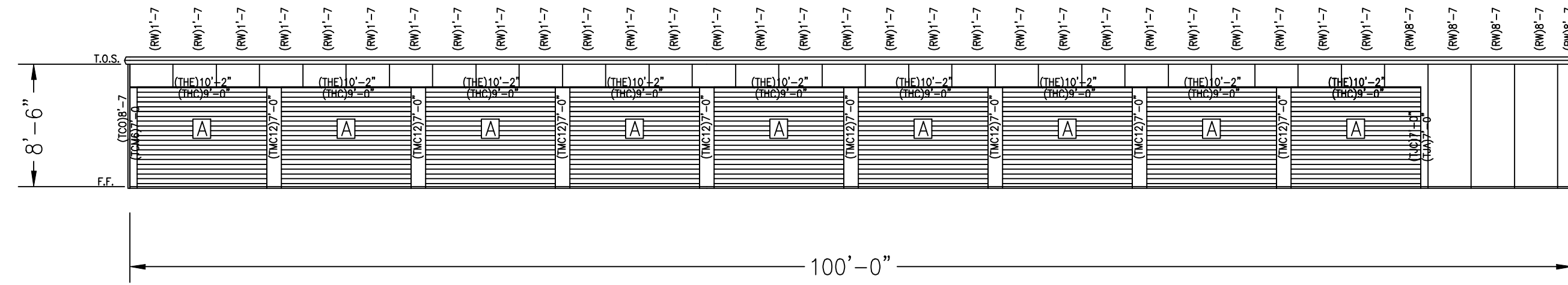
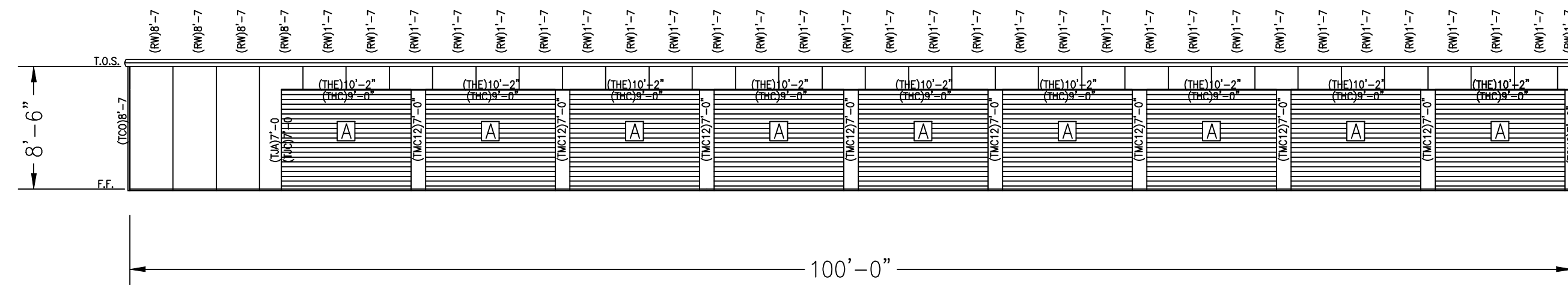


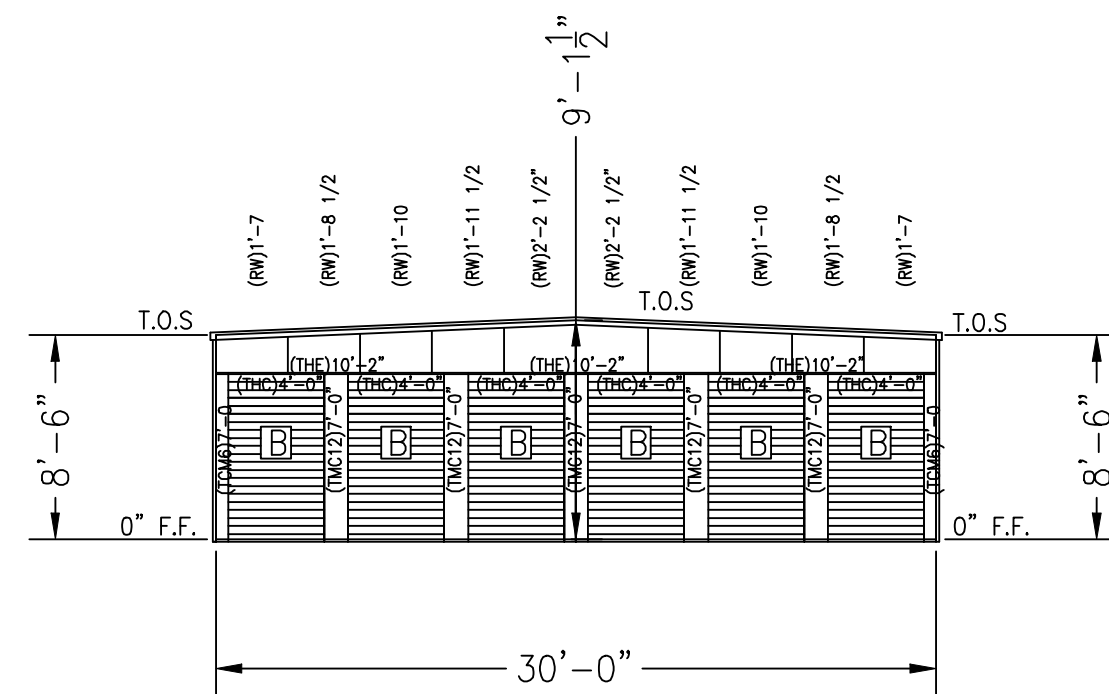
A BLDG A
EAVE ELEV.
SCALE 1/8" = 1'-0"



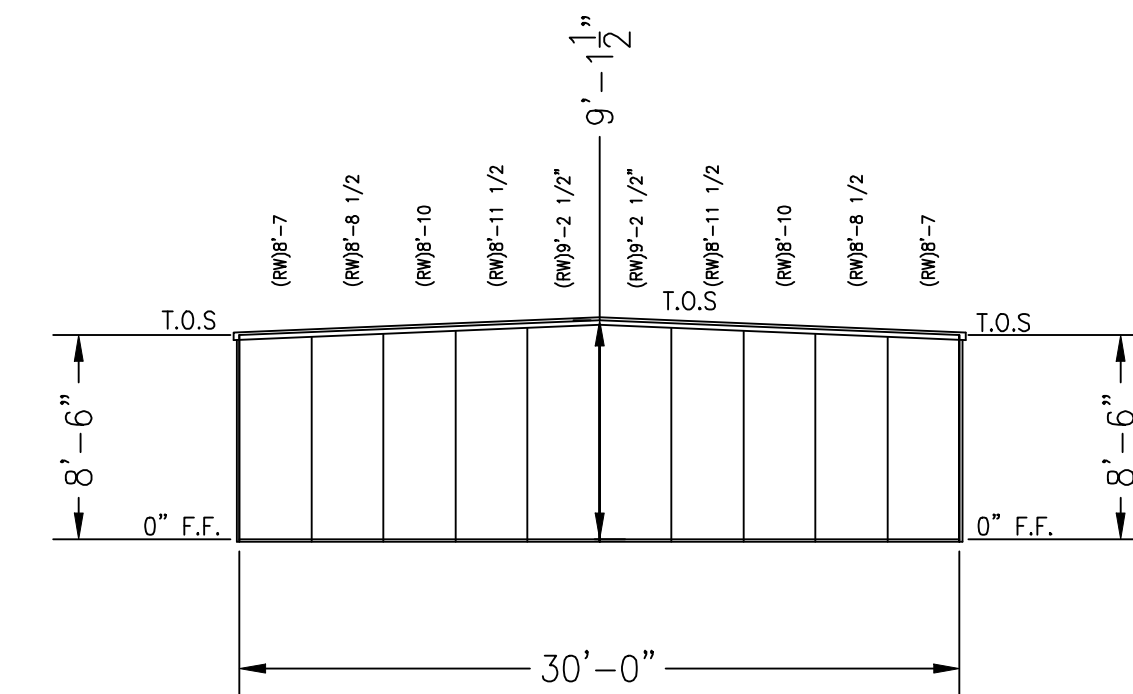
B BLDG A
EAVE ELEV.
SCALE 1/8" = 1'-0"



C BLDG A
RAKE ELEV.
SCALE 1/8" = 1'-0"



D BLDG A
RAKE ELEV.
SCALE 1/8" = 1'-0"



DOOR SCHEDULE

A - (18) EACH 9'-0 X 7'-0 OVERHEAD COIL

B - (6) EACH 4'-0 X 7'-0 OVERHEAD COIL

STRUCTURAL SCHEDULE

| | | |
|------|---|---------------------------|
| (BA) | - 8431BR 4 X 3 X 1/2 ANGLE (8.9) | - FLOOR BASE ANGLE |
| (BB) | - 14251BR 4 1/8 X 2 7/8 X 1/2 CHANNEL (9.9) | - FLOOR BASE CHANNEL |
| (BC) | - C421BR 4 X 2 X 1/2 ANGLE (8.9) | - 4" COLUMN |
| (BD) | - 25251BR 6 X 2 1/2 X 1/2 ANGLE (11.9) | - 6" COLUMN |
| (BE) | - C421BR 4 X 2 X 1/2 ANGLE (8.9) | - DOOR HEAD |
| (BF) | - C421BR 4 X 2 X 1/2 ANGLE (8.9) | - DOOR JAMB |
| (BG) | - 14251BR 4 1/8 X 2 7/8 X 1/2 CHANNEL (9.9) | - EAVE CHANNEL |
| (BH) | - E4431BR/20 3 X 6 X 4 X 1/2 ANGLE STRUT (13.9) | - EAVE STRUT |
| (BI) | - AS MANUFACTURED | - FLOOR CLIP |
| (BJ) | - C421BR 4 X 2 X 1/2 ANGLE (8.9) | - GIRT |
| (BK) | - B421BR 4 X 2 X 1/2 ANGLE (8.9) | - HALL TOP ANGLE |
| (BL) | - C421BR 4 X 2 X 1/2 ANGLE (8.9) | - DOOR HEAD REINFORCEMENT |
| (BM) | - C8251BR 6 X 2 1/2 X 1/2 ANGLE (11.9) | - JACK RAFTER |
| (BN) | - C1241BR 12 X 4 X 1/2 ANGLE (20.9) | - MILLION |
| (BO) | - B421BR 4 X 2 X 1/2 ANGLE (8.9) | - MINN CLIP |
| (BP) | - 24251BR 2 1/2 X 8 X 2 1/2 X 1/2 ANGLE (9.9) | - ROOF PURLIN |
| (BQ) | - 25251BR 2 1/2 X 8 X 2 1/2 X 1/2 ANGLE (11.9) | - ROOF PURLIN |
| (BR) | - 25251BR 2 1/2 X 8 X 2 1/2 X 1/2 ANGLE (13.9) | - ROOF PURLIN |
| (BS) | - B421BR 4 X 2 X 1/2 ANGLE (8.9) | - PARTITION ANGLE |
| (BT) | - B421BR 4 X 2 X 1/2 ANGLE (8.9) | - RAKE ANGLE |
| (BU) | - E4431BR/20 3 X 6 X 4 X 1/2 ANGLE STRUT (13.9) | - ROSE STRUT |

SHEETING SCHEDULE

| | |
|------|-----------------------------|
| (ML) | - 28GA M-LOC WALL PANEL |
| (PL) | - 28GA R-LOC WALL PANEL |
| (QL) | - 28GA PANEL-LOC WALL PANEL |
| (RL) | - 28GA R PANEL WALL PANEL |
| (SR) | - 28GA PBR ROOF PANEL |
| (TW) | - 28GA PBR WALL PANEL |

FASTENER SCHEDULE

| | | |
|-------|---|--------------------------------|
| (F1) | - CONC. EXP. ANCHOR (SIZE BY CUSTOMER) | - BASE TO SLAB CONNECTIONS |
| (F2) | - 1/2 X 1 SD TEK (PLTD) | - STRUCTURAL STEEL CONNECTIONS |
| (F3) | - 1/2 X 1 SD TEK (PLTD) | - PARTITION SHEETING |
| (F4) | - 1/2 X 2 SD TEK (PLTD) | - PARTITION ANGLE CONNECTIONS |
| (F5) | - 1/2 X 1 1/4 WASHER TEK(OR ZAK)(PTD) | - EXTERIOR WALL SHEETING |
| (F6) | - 1/2 X 1 1/4 WASHER TEK(OR ZAK)(PTD)(PLTD) | - ROOF SHEETING |
| (F7) | - 1/2 X 1 1/4 WASHER TEK(OR ZAK)(PTD) | - EXTERIOR TRIM DRILLER |
| (F8) | - 1/4 X 7/8 WASHER TEK(OR ZAK)(PTD) | - EXTERIOR WALL PANEL LAP |
| (F9) | - 1/4 X 7/8 WASHER TEK(OR ZAK)(PTD)(PLTD) | - ROOF PANEL LAP |
| (F10) | - 1/4 X 7/8 WASHER TEK(OR ZAK)(PTD) | - INTERIOR TRIM LAP |
| (F11) | - 1/8 POP RIVET | - EXTERIOR TRIM |
| (F12) | - 1/2 X 1 1/4 WASHER TEK(OR ZAK)(PTD) | - EXTERIOR WALL SHEETING |
| (F13) | - 1/2 X 1 1/4 WASHER TEK(OR ZAK)(PTD) | - INTERIOR TRIM DRILLER |
| (F14) | - 1/4 X 7/8 WASHER TEK(OR ZAK)(PTD) | - INTERIOR WALL PANEL LAP |
| (F15) | - 1/4 X 7/8 WASHER TEK(OR ZAK)(PTD)(PLTD) | - INTERIOR TRIM LAP |
| (F16) | - 1/8 POP RIVET | - INTERIOR TRIM |

TRIM SCHEDULE

| | |
|---------|---------------------------------|
| (BTR) | - 1" ROLL MASTIC |
| (CLW) | - R PANEL INSIDE FOAM CLOSURE |
| (CLOUT) | - R PANEL OUTSIDE FOAM CLOSURE |
| (GSCS) | - GUTTER SEAL |
| (IC) | - R PANEL INSIDE CORNER TRIM |
| (ICD) | - R PANEL OUTSIDE CORNER TRIM |
| (ICW) | - DOOR CORNER MILLION |
| (TK) | - DOWNSPOUT WITH KICK OUT |
| (TSS) | - DOWNSPOUT STRAP |
| (TFS) | - EAVE FLASHING |
| (TRC) | - FORMED ROOF CAP |
| (TR) | - RAKE TRIM |
| (TSA) | - HALL TOP TRIM |
| (TT) | - ROOF TIE IN TRIM |
| (TTR) | - ROOF STEP TRANSITION FLASHING |
| (ASP) | - 40Z TOUCH UP SPRAY PAINT |

TRIM SCHEDULE

| | |
|--------|---------------------------------|
| (ICB) | - INSIDE CORNER BOX |
| (TCS) | - LOW RIS INSIDE CORNER TRIM |
| (TSA) | - DOOR JAMB TRIM |
| (TSC) | - DOOR JAMB CAP |
| (TJT) | - LOW RIS HEAD AND JAMB TRIM |
| (TMC) | - DOOR MILLION COVER TRIM |
| (TCC) | - LOW RIS OUTSIDE CORNER TRIM |
| (TOCB) | - OUTSIDE CORNER BOX |
| (TFS) | - RAKE TRIM END CAP |
| (TFS) | - RAKE TRIM |
| (TSA) | - HALL TOP TRIM |
| (TT) | - ROOF TIE IN TRIM |
| (TTR) | - ROOF STEP TRANSITION FLASHING |
| (ASP) | - 40Z TOUCH UP SPRAY PAINT |

Central States Works
self-storage systems
By Central States Manufacturing

302 Jane Place, Lowell, AR 72745
(877)770-5206 fax (800)356-2971
www.centralstatesmfg.com

project- NOT FOR CONSTRUCTION

customer- PRECONSTRUCTION REVIEW DRAWINGS

draft-ink
p.o. box 14888 springdale, mo. 65814-0888
417.887.0101 fax.888.8064

| drawn | date | chkt | date |
|-------|----------|------|------|
| TVP | 01.01.04 | | |

sheet of
E01-01