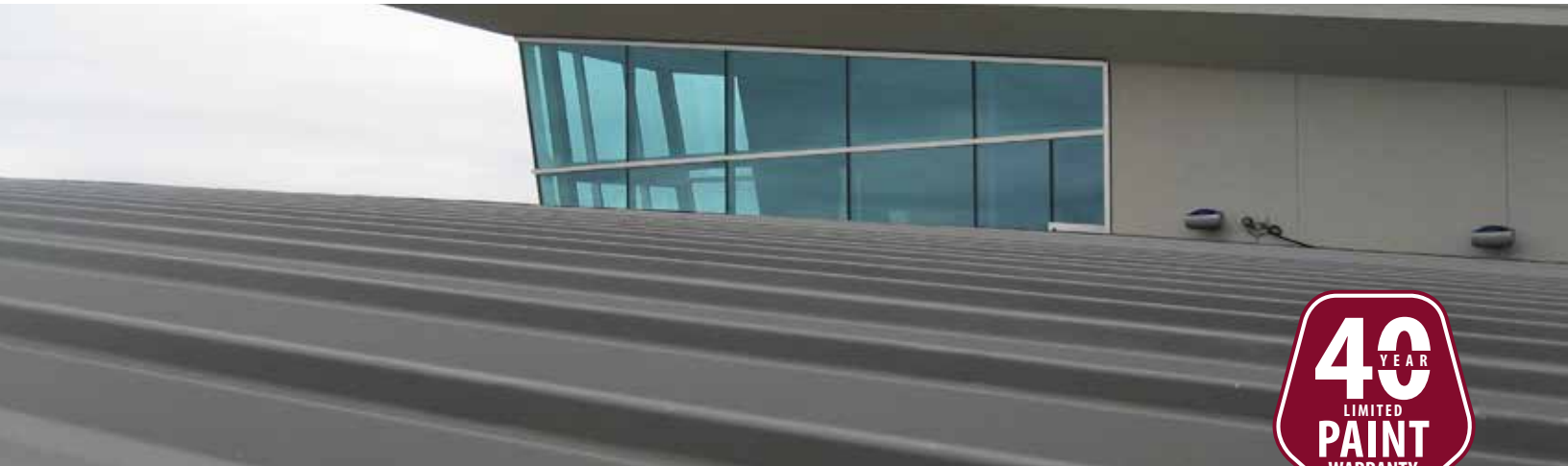


# Central-Loc<sup>®</sup>

## Standing Seam Roof Panel



## A *structural* standing seam panel, with *easy installation*

Central-Loc is a structural standing seam profile ideally suited for economical commercial and industrial applications. The Central-Loc profile has a snap lock joint for ease of installation.

Floating clips allow for thermal roof expansion and contraction during extreme temperature changes and factory applied sealant ensures a secure, weather-tight lap.

- Pre-punched panels and self-engaging backup plates for ease of installation.
- Is UL580 class 90 uplift approved, and is both air and water infiltration ASTM tested as well.



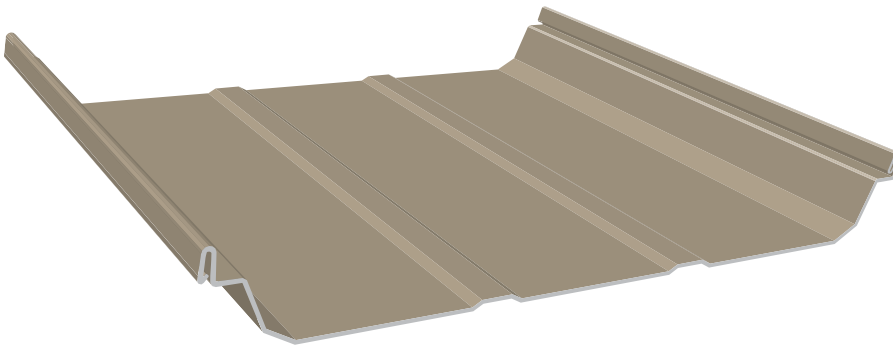
RECOMMENDED <b>1/4:12</b> PITCH AND ABOVE	<b>24</b> GAUGE	<b>18"</b> OR <b>24"</b> OVERALL COVERAGE	<b>3"</b> MAXIMUM RIB HEIGHT
--	--------------------	--	------------------------------------



[WWW.CENTRALSTATESMFG.COM](http://WWW.CENTRALSTATESMFG.COM)

Copyright © 2017, Central States Manufacturing, Inc., All Rights Reserved.  
Galvalume® is a registered trademark of BIEC International, Inc.

 FLYR\_CentralLoc\_170315



# Choose an energy efficient paint finish.

To help reduce air conditioning and heating bills, choose a color that is more than just appealing to the eye.

Two factors, solar reflectivity and emissivity, are considered when determining energy efficiency. They are a measurement of the metal roof's ability to reflect sunlight and to release absorbed heat. The combined values are shown in the paint's Solar Reflectivity Index (SRI) value.

Choose a color such as Brite, with a high SRI value in warmer climates to reflect heat. A color such as Bronze with a lower SRI value will help retain heat in cooler climates.

COLOR	INITIAL SOLAR REFLECTIVITY	INITIAL EMISSIVITY	SRI VALUE
Ash	0.39	0.84	41
Autumn	0.31	0.84	31
Beige	0.40	0.86	43
Brite	0.65	0.85	78
Bronze	0.27	0.86	26
Dark Bronze	0.26	0.84	24
Evergreen	0.26	0.84	24
Galvalume® (Acrylic Coated)	0.77	0.08	72
Roman	0.26	0.85	24
Sand	0.53	0.86	61
Slate Gray	0.37	0.87	40
Smoke	0.32	0.85	32
Terratone	0.33	0.86	34
Tudor	0.29	0.86	29
Vedigris	0.37	0.85	39

Solar reflectance values are determined by means of a solar spectrum reflectometer in accordance with ASTM C 1549. 3-year results are not available. Thermal emittance values are determined in accordance with ASTM C 1371 SRI is calculated in accordance to ASTM E 1980 with medium wind speed. Laboratory and Exposure site are ISO 17025 Accredited, Laboratory is also EPA Accredited. Panels are unwashed.

For more information visit  
[www.AllMetalNotEqual.com](http://www.AllMetalNotEqual.com)

## MINIMUM SPECIFICATIONS

**GAUGE**  
24ga

**STEEL THICKNESS**  
0.023"

**PAINT THICKNESS**  
 Top coat paint: .70 mils  
 Top coat primer: .20 mils  
 Bottom coat backer: .35 mils  
 Bottom coat primer: .20 mils

**TOTAL THICKNESS**  
.0247"

**RUST PROTECTANT SUBSTRATE**  
 Galvalume® AZ55, acrylic bare  
 Galvalume® AZ50, painted

**STEEL STRENGTH**  
50,000 PSI min

**PAINT SYSTEM**  
 CentralGuard® with Fluoropon®  
 powered by Valspar®

**WARRANTY**  
 40 yr paint adhesion  
 30 yr chalk and fade  
 20 yr Galvalume® perforation warranty

## TESTING & APPROVALS

### TESTING

- ASTM-E1680 Air Leakage Test through exterior metal roof panel
- ASTM-E1646 Water Leakage Test of exterior metal roof panel

### APPROVALS

- UL2218 UL Approval, Impact Resistance, Class 4
- UL580 UL Approval, Uplift Resistance, Class 90
- UL790 UL Approval, Fire Resistance, Class A
- FL14016.2 Florida Approval, 24 gauge roof panel over open framing (NON-HVHZ)

CentralGuard® is an advanced system engineered by Central States® to protect our metal against fade, dent and rust, and is a trademark of Central States® Manufacturing, Inc.