

Central-Seam Plus®

Standing Seam Roof Panel

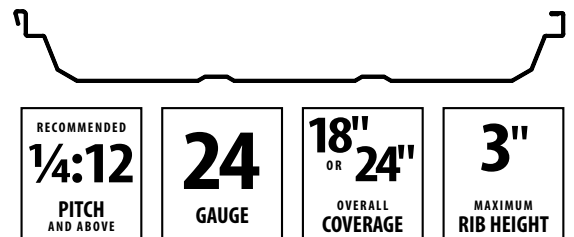


Ideal for *commercial* and *industrial* applications

Central Seam Plus is perfect for economical commercial and industrial applications that need the extra strength and durability of a mechanically seamed roof.

Pre-punched panels are available and self-engaging backup plates allow for easier installation.

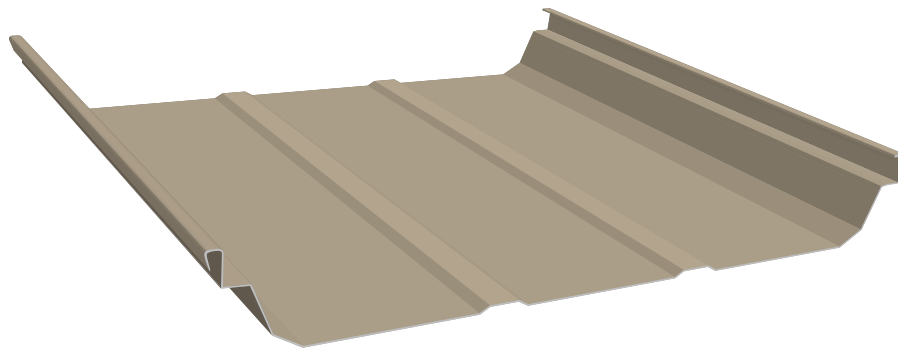
- Factory applied sealant insures a weather-tight and secure lap.
- Floating clips allow for thermal roof expansion and contraction during extreme temperature changes.
- Comprehensive step-by-step erection manuals come with each order.



WWW.CENTRALSTATESMFG.COM

Copyright © 2016, Central States Manufacturing, Inc., All Rights Reserved.
Galvalume® is a registered trademark of BIEC International, Inc.

FLYR_CentralSeamPlus_170328



Choose an energy efficient paint finish.

To help reduce air conditioning and heating bills, choose a color that is more than just appealing to the eye.

Two factors, solar reflectivity and emissivity, are considered when determining energy efficiency. They are a measurement of the metal roof's ability to reflect sunlight and to release absorbed heat. The combined values are shown in the paint's Solar Reflectivity Index (SRI) value.

Choose a color such as Brite, with a high SRI value in warmer climates to reflect heat. A color such as Bronze with a lower SRI value will help retain heat in cooler climates.

COLOR	INITIAL SOLAR REFLECTIVITY	INITIAL EMISSIVITY	SRI VALUE
Ash	0.39	0.84	41
Autumn	0.31	0.84	31
Beige	0.40	0.86	43
Brite	0.65	0.85	78
Bronze	0.27	0.86	26
Dark Bronze	0.26	0.84	24
Evergreen	0.26	0.84	24
Galvalume® (Acrylic Coated)	0.77	0.08	72
Roman	0.26	0.85	24
Sand	0.53	0.86	61
Slate Gray	0.37	0.87	40
Smoke	0.32	0.85	32
Terratone	0.33	0.86	34
Tudor	0.29	0.86	29
Vedigris	0.37	0.85	39

Solar reflectance values are determined by means of a solar spectrum reflectometer in accordance with ASTM C 1549. 3-year results are not available. Thermal emittance values are determined in accordance with ASTM C 1371 SRI is calculated in accordance to ASTM E 1980 with medium wind speed. Laboratory and Exposure site are ISO 17025 Accredited, Laboratory is also EPA Accredited. Panels are unwashed.

For more information visit
www.AllMetalNotEqual.com

MINIMUM SPECIFICATIONS

GAUGE
24ga

STEEL THICKNESS
0.023"

PAINT THICKNESS
 Top coat paint: .70 mils
 Top coat primer: .20 mils
 Bottom coat backer: .35 mils
 Bottom coat primer: .35 mils

TOTAL THICKNESS
.0247"

RUST PROTECTANT SUBSTRATE
 Galvalume® AZ55, acrylic bare
 Galvalume® AZ50, painted

STEEL STRENGTH
50,000 PSI min

PAINT SYSTEM
 CentralGuard® with Fluropon®
 powered by Valspar®

WARRANTY
 40 yr paint adhesion
 30 yr chalk and fade
 20 yr Galvalume® perforation warranty

TESTING & APPROVALS

TESTING
 ASTM-E1592.1 Structural Test for Roof Systems, 24 gauge
 ASTM-E1680 Air Leakage Test through exterior metal roof panel
 ASTM-E1646 Water Leakage Test of exterior metal roof panel
 FM4471 Foot Traffic Resistance Test

APPROVALS
 UL2218 UL Approval, Impact Resistance, Class 4
 UL580 UL Approval, Uplift Resistance, Class 90
 UL790 UL Approval, Fire Resistance, Class A
 FL14016.1 Florida Approval, 24 gauge roof panel over open framing (NON-HVHZ)
 RC-448 Texas Windstorm Approval, 24 gauge, with wind clamps, over steel purlins
 RC-449 Texas Windstorm Approval, 24 gauge over steel purlins

CentralGuard® is an advanced system engineered by Central States® to protect our metal against fade, dent and rust, and is a trademark of Central States® Manufacturing, Inc.