



# Let us do the bidding, you do the selling.

We now have the ability to generate complex roofing reports, including take-offs and complete material estimates for your project needs. TopView™ reports are generated quickly and accurately using minimal information. Our expert TopView™ staff is dedicated to our commitment of getting your order back to you quickly and accurately.

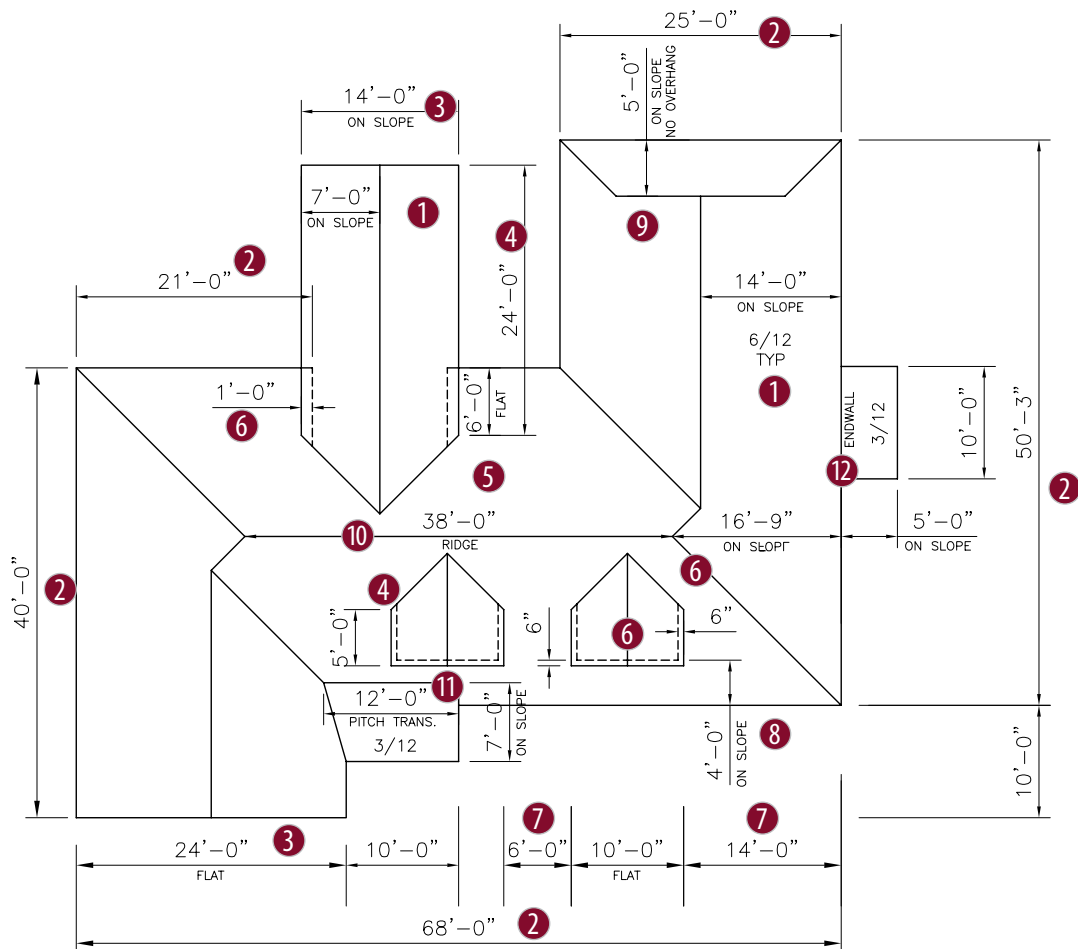
## FEATURES:

- Easy to use roof map to know exactly where every piece goes.
- Professional presentation drawings to enhance your bid.
- Panel & Trim Piece Count.\*

\*Estimated quantities and lengths are based on information provided. Customer must field verify all dimensions, quantities and finishes prior to order placement and installation.



[www.CentralStatesMfg.com](http://www.CentralStatesMfg.com)



## Guidelines for submitting a job drawing or field verified job

- 1 List all roof slopes. If roof slopes are not known, then provide panel lengths, and horizontal dimensions.
- 2 Provide all eave dimensions.
- 3 For gable ends, please note whether dimension is on the slope or flat.
- 4 Provide eave length of dormer (not sidewall length).
- 5 On dormer sections that extend past the eave line, provide distance from the main roof eave to where the valley starts on the dormer. Also state as to whether the dimension is on the slope (sidewall) or not.
- 6 Provide dormer side and front overhang.
- 7 Provide distance of dormer roof corner to a corner of the main roof for proper dormer placement or from another dormer section.
- 8 Provide distance from eave to endwall of dormer, please note as to whether the dimension is on the slope or not.
- 9 On dutch gables, distance from eave to gable. Please note whether dimension is on slope or not. Also specify any overhang.
- 10 Provide ridge lengths.
- 11 Pitch transition length.
- 12 Call out trim conditions that may be unclear in plan view (endwall vs. pitch transition).