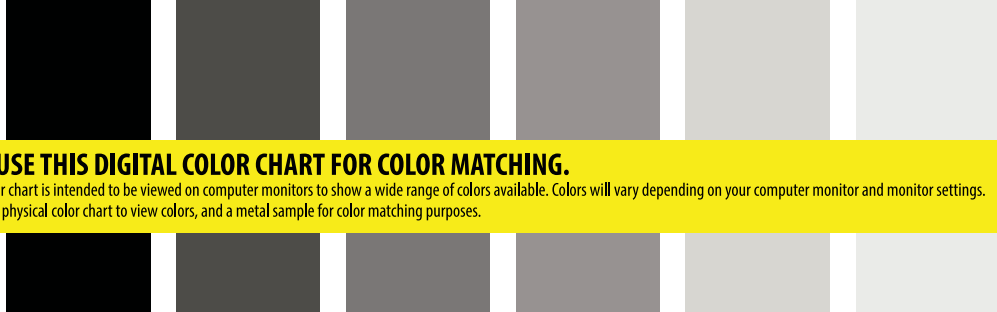


DO NOT USE THIS DIGITAL COLOR CHART FOR COLOR MATCHING.

This digital color chart is intended to be viewed on computer monitors to show a wide range of colors available. Colors will vary depending on your computer monitor and monitor settings. Please ask for a physical color chart to view colors, and a metal sample for color matching purposes.



Black
STANDARD | PRIME
Trim in 29 ga only.

Charcoal
STANDARD | PRIME | ULTRA
PRIME G90

Pewter
PRIME
Trim in 29ga only.

Gray
STANDARD | PRIME | ULTRA
PRIME G90

Alamo
STANDARD | PRIME | ULTRA
STANDARD G60 | PRIME G90
Trim in 29 ga only.

Brilliant
STANDARD | PRIME | ULTRA
STANDARD G60 | PRIME G90

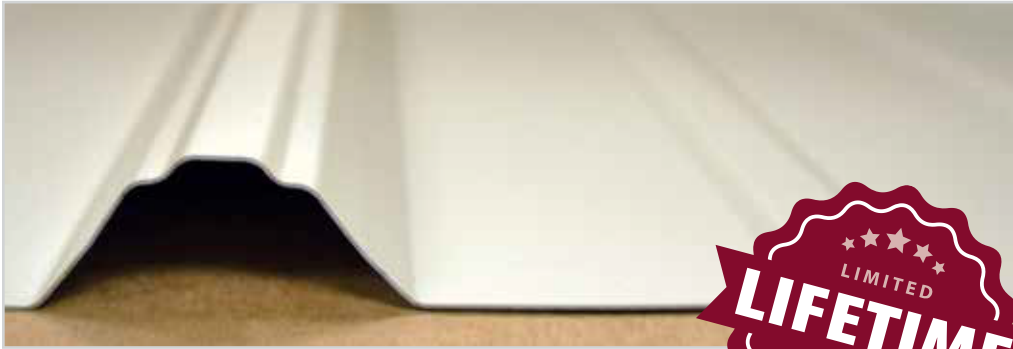


Choose CentralGuard for the best protection and a lifetime warranty

Panel-Loc Plus™

Color Selection Tool

Includes CD 2000® and galvanized 29 ga.



www.centralstatesmfg.com

*Contact your sales person for accurate pricing. † Color variation between orders is normal and not cause for rejection. ‡ Weathering and appearance variation, including color, sheen, and spangle, is common in non-painted materials and is not a cause for rejection. For consistent appearance, choose a paint-finished product.

Colors on this chart are close representations of actual metal color, limited by printing and viewing conditions. Color matching is optimized for outdoor viewing.

E CHRT_PLPL_HA_200101

SHERWIN-WILLIAMS
Coil Coatings



Check our website to verify which colors meet ENERGY STAR® requirements for steep slope roofs.

Forest
STANDARD | PRIME | ULTRA

Hunter
STANDARD | PRIME | ULTRA
PRIME G90

Colony
PRIME
Trim in 26 ga only.

Crimson
PRIME | ULTRA

Rustic
STANDARD | PRIME | ULTRA
PRIME G90

Burgundy
STANDARD | PRIME | ULTRA
PRIME G90

Gallery
PRIME | ULTRA
PRIME G90

Ocean
PRIME | ULTRA
Trim in 29ga only.

Ivory
PRIME
Trim in 29 ga only.

Light Stone
STANDARD | PRIME | ULTRA
PRIME G90

Desert
PRIME
Trim in 26ga only.

Taupe
STANDARD | PRIME | ULTRA
PRIME G90

PREMIUM COLOR

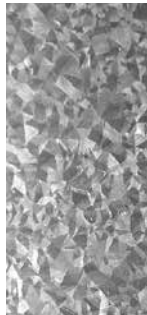
Fluropon® 70% PVDF
Copper Metallic*†
PRIME



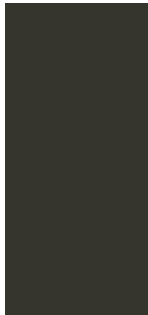
Trim in 29ga only.
Clear acrylic coating
Galvanized‡
STANDARD G60 | STANDARD G90



Clear acrylic coating
Galvalume®‡
STANDARD | PRIME | ULTRA



Burnished Slate
STANDARD | PRIME | ULTRA
PRIME G90



Brown
STANDARD | PRIME | ULTRA
PRIME G90



Tan
STANDARD | PRIME | ULTRA



Choose CentralGuard[®] for the best protection and a lifetime warranty.

CentralGuard is our specific combination of everything that goes into making the highest-quality metal panels. Available on our Prime, and Ultra panels, the CentralGuard name is a guarantee that you have the best protection and a lifetime paint warranty.

Choose CentralGuard for the perfect balance of fade protection, rust blocking, and dent resistance.



Visualize it on your home.

Use our color visualizer to quickly test different color combinations for your project. Upload a photo of your home, or try out some of our sample projects.



Find the color visualizer at www.centralstatesmfg.com



	STANDARD	PRIME CentralGuard	PRIME G90 CentralGuard	ULTRA CentralGuard
FADE PROTECTION				
Paint Warranty	40-YEAR	LIFETIME	LIFETIME	LIFETIME
Paint Thickness	THICK .90 mil	THICKER 1.0 mil	THICKER 1.0 mil	THICKER 1.0 mil
Fade Protection	✓	✓✓	✓✓	✓✓
Fade Warranty	30-YEAR	30-YEAR	30-YEAR	30-YEAR
RUST BLOCKING				
Advanced Rust Blocking	-	✓	✓	✓
Perforation Warranty	-	20-YEAR	-	20-YEAR
Substrate Thickness	1.12 mil	1.60 mil	1.53 mil	1.60 mil
Substrate Coating	varies	Galvalume	galvanized	Galvalume
DENT RESISTANCE				
Advanced Dent Resistance	-	✓	✓	✓✓
Steel Thickness	THIN	THICK	THICK	THICKEST
Steel Gauge	29 ga.	29 ga.	29 ga.	26 ga.

Panel-Loc Plus and CD 2000 feature UL2218 approval for impact resistance and may qualify for a homeowners insurance discount. See your local insurance agent for qualifications.

Panel-Loc Plus[™]



CD 2000[®]

