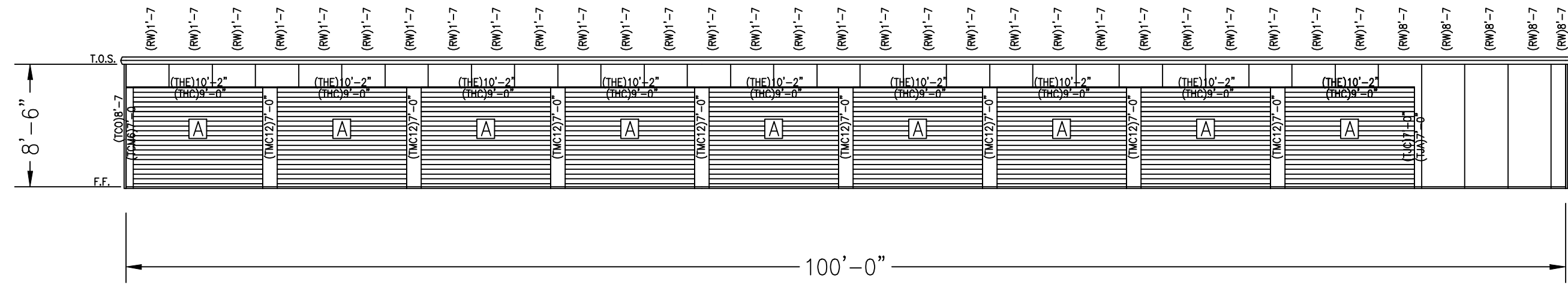
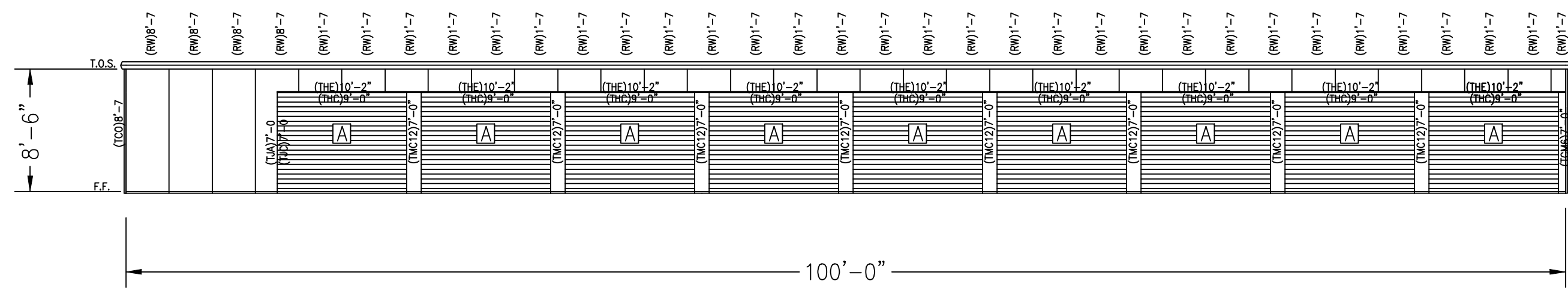


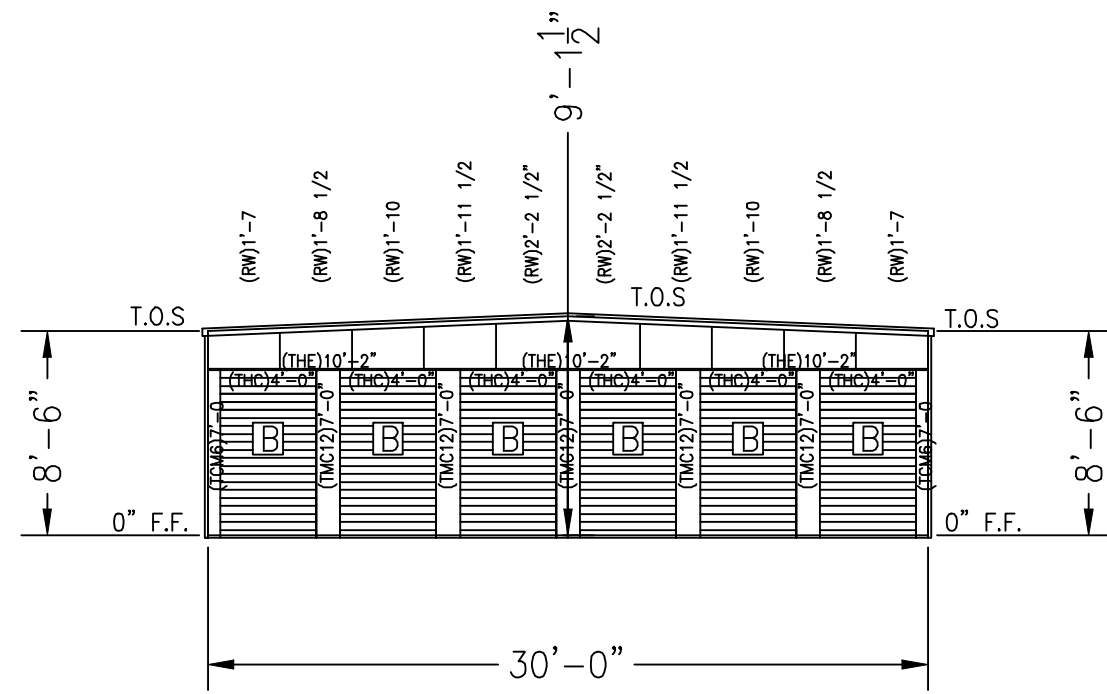
**A** BLDG A  
EAVE ELEV.  
SCALE 1/8" = 1'-0"



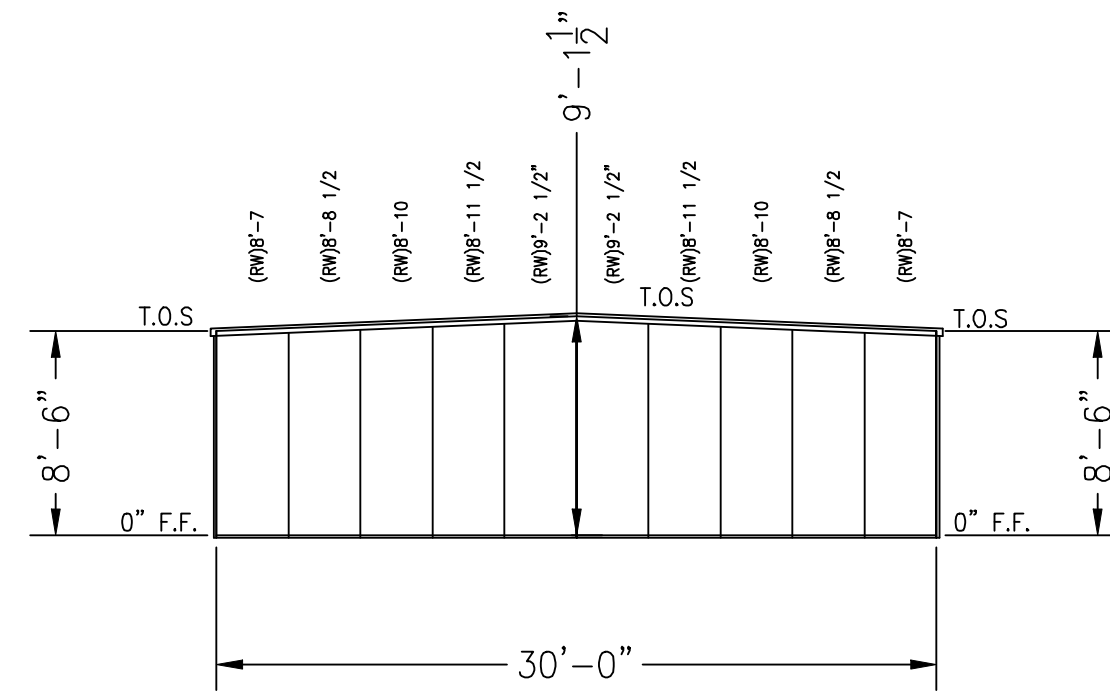
**B** BLDG A  
EAVE ELEV.  
SCALE 1/8" = 1'-0"



**C** BLDG A  
RAKE ELEV.  
SCALE 1/8" = 1'-0"



**D** BLDG A  
RAKE ELEV.  
SCALE 1/8" = 1'-0"



**DOOR SCHEDULE**

**A** - (18) EACH 9'-0 X 7'-0 OVERHEAD COIL

**B** - (6) EACH 4'-0 X 7'-0 OVERHEAD COIL

**STRUCTURAL SCHEDULE**

|      |  |                           |
|------|--|---------------------------|
| (BA) | - 8431BR 4 X 3 X 1/2 ANGLE (8.9)               | - FLOOR BASE ANGLE        |
| (BB) | - 14251BR 4 1/8 X 2 7/8 X 1/2 CHANNEL (9.9)    | - FLOOR BASE CHANNEL      |
| (BC) | - C421BR 4 X 2 X 1/2 ANGLE (8.9)               | - 4" COLUMN               |
| (BD) | - 26251BR 6 X 2 1/2 X 1/2 ANGLE (11.9)         | - 6" COLUMN               |
| (BE) | - C421BR 4 X 2 X 1/2 ANGLE (8.9)               | - DOOR HEAD               |
| (BF) | - C421BR 4 X 2 X 1/2 ANGLE (8.9)               | - DOOR JAMB               |
| (BG) | - 14251BR 4 1/8 X 2 7/8 X 1/2 CHANNEL (9.9)    | - EAVE CHANNEL            |
| (BH) | - E8431BR/2 3 X 6 X 4 X 1/2 ANGLE STRUT (13.9) | - EAVE STRUT              |
| (BI) | - AS MANUFACTURED                              | - FLOOR CLIP              |
| (BJ) | - C421BR 4 X 2 X 1/2 ANGLE (8.9)               | - GUT                     |
| (BK) | - B421BR 4 X 2 X 1/2 ANGLE (5.9)               | - HALL TOP ANGLE          |
| (BL) | - C421BR 4 X 2 X 1/2 ANGLE (8.9)               | - DOOR HEAD REINFORCEMENT |
| (BM) | - C8251BR 6 X 2 1/2 X 1/2 ANGLE (11.9)         | - JACK RAFTER             |
| (BN) | - C1241BR 12 X 4 X 1/2 ANGLE (20.9)            | - MULLION                 |
| (BO) | - B421BR 4 X 2 X 1/2 ANGLE (5.9)               | - MINN CLIP               |
| (BP) | - 24251BR 2 1/2 X 8 X 2 1/2 X 1/2 ANGLE (9.9)  | - ROOF PURLIN             |
| (BQ) | - 26251BR 2 1/2 X 8 X 2 1/2 X 1/2 ANGLE (11.9) | - ROOF PURLIN             |
| (BR) | - 28251BR 2 1/2 X 8 X 2 1/2 X 1/2 ANGLE (13.9) | - ROOF PURLIN             |
| (BS) | - B421BR 4 X 2 X 1/2 ANGLE (5.9)               | - PARTITION ANGLE         |
| (BT) | - B421BR 4 X 2 X 1/2 ANGLE (5.9)               | - RAKE ANGLE              |
| (BU) | - E8431BR/2 3 X 6 X 4 X 1/2 ANGLE STRUT (13.9) | - ROSE STRUT              |

**SHEETING SCHEDULE**

|      |                           |
|------|---------------------------|
| (ML) | - 28GA M-LOC WALL PANEL   |
| (PL) | - 28GA P-LOC WALL PANEL   |
| (RL) | - 28GA R-PANEL WALL PANEL |
| (RR) | - 28GA PBR ROOF PANEL     |
| (RW) | - 28GA PBR WALL PANEL     |

**FASTENER SCHEDULE**

|       |  |                                |
|-------|--|--------------------------------|
| (F1)  | - CONC. EXP. ANCHOR (SIZE BY CUSTOMER)     | - BASE TO SLAB CONNECTIONS     |
| (F2)  | - 12 X 1 SD TEK (PLT)                      | - STRUCTURAL STEEL CONNECTIONS |
| (F3)  | - 12 X 1 SD TEK (PLT)                      | - PARTITION SHEETING           |
| (F4)  | - 12 X 2 SD TEK (PLT)                      | - PARTITION ANGLE CONNECTIONS  |
| (F5)  | - 12 X 1 1/4 WASHER TEK(OR ZAK)(PTD)       | - EXTERIOR WALL SHEETING       |
| (F6)  | - 12 X 1 1/4 WASHER TEK(OR ZAK)(PTD)(PLTD) | - ROOF SHEETING                |
| (F7)  | - 12 X 1 1/4 WASHER TEK(OR ZAK)(PTD)       | - EXTERIOR TRIM DRILLER        |
| (F8)  | - 14 X 7/8 WASHER TEK(OR ZAK)(PTD)         | - EXTERIOR WALL PANEL LAP      |
| (F9)  | - 14 X 7/8 WASHER TEK(OR ZAK)(PTD)(PLTD)   | - ROOF PANEL LAP               |
| (F10) | - 14 X 7/8 WASHER TEK(OR ZAK)(PTD)         | - INTERIOR TRIM LAP            |
| (F11) | - 1/8 POP RIVET                            | - EXTERIOR TRIM                |
| (F12) | - 12 X 1 1/4 WASHER TEK(OR ZAK)(PTD)       | - EXTERIOR WALL SHEETING       |
| (F13) | - 12 X 1 1/4 WASHER TEK(OR ZAK)(PTD)       | - INTERIOR TRIM DRILLER        |
| (F14) | - 14 X 7/8 WASHER TEK(OR ZAK)(PTD)         | - INTERIOR WALL PANEL LAP      |
| (F15) | - 14 X 7/8 WASHER TEK(OR ZAK)(PTD)(PLTD)   | - INTERIOR TRIM LAP            |
| (F16) | - 1/8 POP RIVET                            | - INTERIOR TRIM                |

**TRIM SCHEDULE**

|         |                                 |
|---------|---------------------------------|
| (BTR)   | - 1" ROLL MASTIC                |
| (CLN)   | - R PANEL INSIDE FOAM CLOSURE   |
| (CLOUT) | - R PANEL OUTSIDE FOAM CLOSURE  |
| (GEOS)  | - GUTTER SEAL                   |
| (IC)    | - R PANEL INSIDE CORNER TRIM    |
| (ICD)   | - R PANEL OUTSIDE CORNER TRIM   |
| (ICW)   | - DOOR CORNER MULLION           |
| (TDK)   | - DOWNSPOUT WITH KICK OUT       |
| (TDS)   | - DOWNSPOUT STRAP               |
| (TFS)   | - EAVE FLASHING                 |
| (TRC)   | - FORMED ROOF CAP               |
| (TRM)   | - RAKE TRIM                     |
| (TSA)   | - HALL TOP TRIM                 |
| (TT)    | - ROOF TIE IN TRIM              |
| (TTR)   | - ROOF STEP TRANSITION FLASHING |
| (ASP)   | - 40Z TOUCH UP SPRAY PAINT      |

**TRIM SCHEDULE**

|        |                                 |
|--------|---------------------------------|
| (ICB)  | - INSIDE CORNER BOX             |
| (TCS)  | - LOW RIS INSIDE CORNER TRIM    |
| (TCA)  | - DOOR JAMB TRIM                |
| (TCC)  | - DOOR JAMB CAP                 |
| (TCT)  | - LOW RIS HEAD AND JAMB TRIM    |
| (TMC)  | - DOOR MULLION COVER TRIM       |
| (TCC)  | - LOW RIS OUTSIDE CORNER TRIM   |
| (TOCB) | - OUTSIDE CORNER BOX            |
| (TFS)  | - PEAK BOX                      |
| (TRC)  | - RAKE TRIM END CAP             |
| (TRM)  | - RAKE TRIM                     |
| (TSA)  | - HALL TOP TRIM                 |
| (TT)   | - ROOF TIE IN TRIM              |
| (TTR)  | - ROOF STEP TRANSITION FLASHING |
| (ASP)  | - 40Z TOUCH UP SPRAY PAINT      |

**Central States Works**  
self-storage systems  
By Central States Manufacturing

302 Jane Place, Lowell, AR 72745  
(877)770-5206 fax (800)356-2971  
www.centralstatesmfg.com

**project-** NOT FOR CONSTRUCTION

**customer-** PRECONSTRUCTION REVIEW DRAWINGS

**draft-ink**  
p.o. box 14888 springdale, mo. 65814-0888  
417.887.0101 fax.888.8064

| drawn | date     | chkt | date |
|-------|----------|------|------|
| TVP   | 01.01.04 |      |      |

**sheet of**  
**E01-01**